

Customer :

customer

Customer part :

customer part

Comment :

Comment

S1=0.03

S2=0.27

Tmax=512

Tp S2=551.0

PI=0.1

HI=26

Sample =10462.8

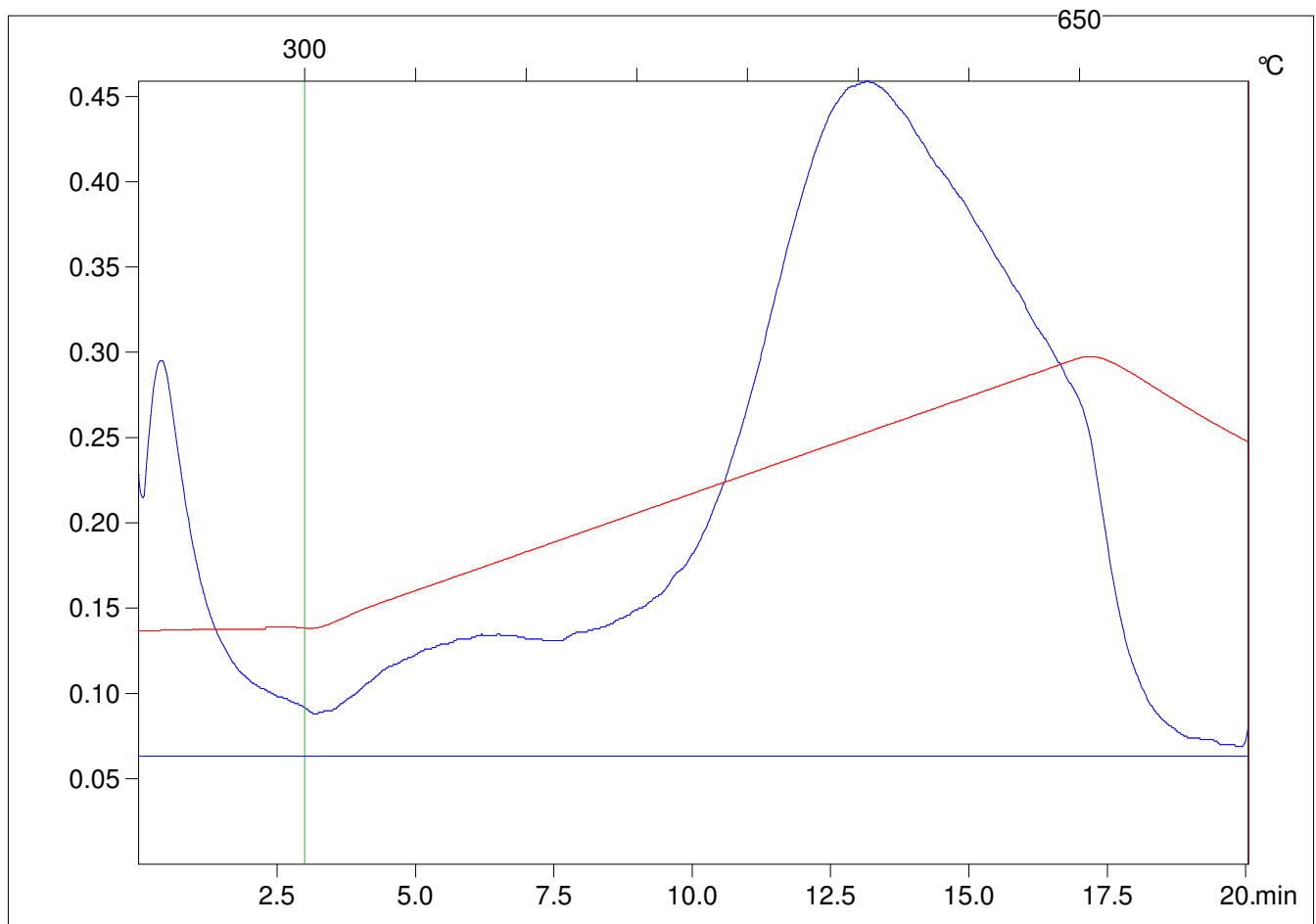
Method =Bulk Rock

Cycle=Basic

KFID(10*9)=1167

Qty =70.5

TOC=1.05



C:\VINC\PK141021\PK007.R00 : FID pyrolysis graphic

State

Pyro Status

Oxi Status